



OWATROL OIL®

RUST INHIBITOR

USAGE

- Interior / Exterior.
- Metal.
- Wood, stone or other porous surfaces.
- Excellent result in both warm and cold conditions.
- As additive for paint.

PROPERTIES

- Penetrates deeply until it reaches the sound metal.
- Drives out moisture and air.
- Uses rust as a pigment to form a protective coat.
- Stabilises the rust and prevents its reforming.
- Creates a lasting protection.
- Colourless – maintains the surface's natural aspect.
- Acts as a first class primer for painting.
- Allows painting directly on rust.



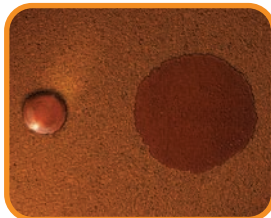
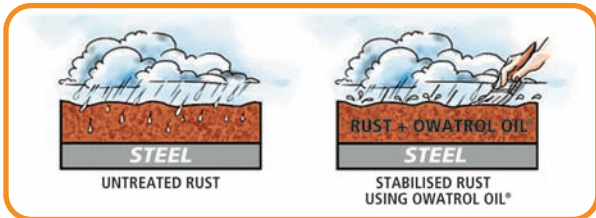
APPLICATION

New surfaces / Slightly rusted or sanded surfaces:

- Make sure surface is dry and clean of grease.
- Apply one coat of pure OWATROL OIL®.
- After drying, ensure that the surfaces are shiny and evenly protected.

Surfaces with old paint / Very rusty surfaces:

- Eliminate loose rust or old unstable paint.
- Make sure surface is dry and clean of grease.
- Apply one coat of pure OWATROL OIL®.
- Before drying, remove rust or paint that has come loose.
- After drying, ensure that the surfaces are shiny and evenly protected. Touch up locally.
- Apply a second coat with 25% OWATROL OIL® and 75% oil-based paint.



Remarkable penetrating and wetting power:

a drop of OWATROL OIL® expands on its own to cover a surface 150 times its original size

COVERAGE 18 m ² /l	APPLICATION TOOLS 	TEMPERATURE FOR APPLICATION +35°C +5°C	DRYING TIME 12-24h	CLEAN UP WHITE-SPIRIT
---	------------------------------	---	------------------------------	-------------------------------------



Owatrol International SL
 C/Aragón 179, 5º - 08011 Barcelona - Spain
 Tel: +34 934 51 66 04 - Fax: +34 934 52 14 54
 info@owatrol.com - www.owatrol.com