

CLEARING THE CONFUSION ON CLEAR MASONRY COATINGS

A guide to protecting masonry with a decorative sheen that extends the life of the surface.



UGL®

WHICH SEALER IS RIGHT FOR THE JOB?

United Gilsonite Laboratories (UGL®) manufactures four different clear sealers specifically designed to protect masonry surfaces. Each clear sealer offers different degrees of protection as well as different visual properties.



Conforms to ASTM D6904,
Resistance to Wind-Driven Rain.
Meets performance requirements of Federal Spec.
TT-C-555B, PAR 3.3.3, Resistance to Wind-Driven Rain.
Masterformat®:
07 19 00 Water Repellants

APPLICATION

Commercial, Residential, and Institutional Buildings
Ideal for new construction, infrastructure, and remodel projects

- Brick Facades and Chimneys
- Concrete Blocks
- Architectural Concrete
- Stucco
- Cultured Stone

DRYLOK® Siloxane 7 Brick & Masonry Penetrating Sealer

is the easiest to explain. This is a clear – absolutely invisible water repellent which creates a long lasting barrier against moisture. This new DRYLOK® Siloxane 7 Brick & Masonry Penetrating Sealer is a special blend of Silane/Siloxane which sets the industry standard for superior vertical/horizontal surface moisture protection. DRYLOK® Siloxane 7 Brick & Masonry Penetrating Sealer penetrates the substrate without creating a film on the surface, and without changing the look or texture of the surface. It maintains the original appearance of the substrate and allows moisture vapor to escape, while sealing and protecting. It is ideal for brick homes and brick chimneys that need invisible protection from deterioration and staining. This product will also weatherproof the mortar and stop it from chipping and flaking. DRYLOK® Siloxane 7 Brick & Masonry Penetrating Sealer is a water base, breathable sealer that resists 98 mph wind-driven rain.

INVISIBLE PROTECTION AGAINST MOISTURE PENETRATION ON VERTICAL & HORIZONTAL ABOVE GRADE, EXTERIOR MASONRY SURFACES

BREATHABLE FILM DOES NOT TRAP MOISTURE

BLENDS SILANE/SILOXANE

EASY TO APPLY WITH SPRAY, BRUSH, ROLLER



LIMITED WARRANTY



FOR INTERIOR/EXTERIOR
VERTICAL AND HORIZONTAL
USE, BARE OR PAINTED
CONCRETE, PAVERS, STAMPED
CONCRETE, BRICK, EXPOSED
AGGREGATE, NATURAL, AND
ARTIFICIAL STONE

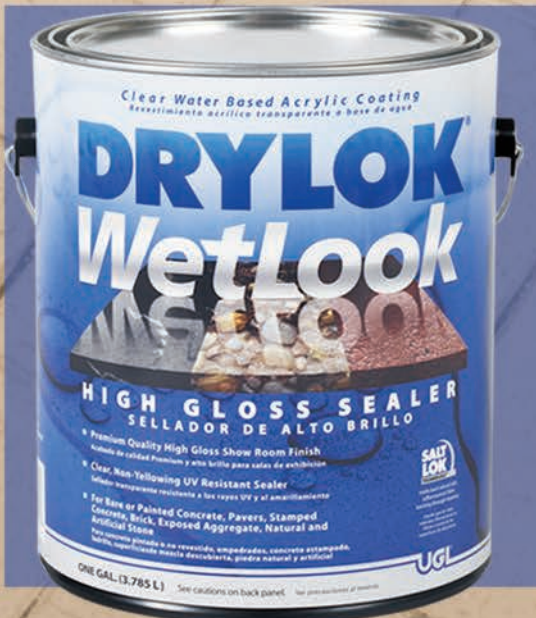
While most of these products have similar protective properties they have different looks when applied because of their sheen levels. Choosing between these products will depend on design preference and personal taste.



*** Penetrates into the surface providing superior resistance to natural salts (efflorescence) from leaching through masonry**

The unsightly white powdery residue that forms on masonry surfaces is called efflorescence. This occurs when soluble salts and other water dispersible materials come to the surface. Low temperatures, moist conditions, condensation, rain, dew, and the water added to the surface of fresh concrete may promote efflorescence producing conditions.

Follow label application directions for the sealer that meets your needs.



DRYLOK® Natural Look Sealer has the least amount of solids (15%) so it has practically no sheen and is the most economical. This is the perfect product for planting bed dividers, planters, and stepping stones placed in low traffic areas. This type of coating may have to be applied more often than a higher solid coating if there is heavy foot or automobile traffic. It is ideal for bright white concrete and for other masonry surfaces where protection is needed but an appearance change is not desired. This product is also perfect for use as a masonry paint primer. One Coat Protection. Meets A.S.T.M. Specification C-309.

**MATTE PROTECTION
WITH A NATURAL APPEARANCE**

**MINIMIZES CONCRETE DUSTING,
CRACKING, AND POCK MARKING**

HARDENS CONCRETE



DRYLOK® Concrete Protector with SaltLok® is a low sheen clear coat. This is the perfect coating for the house with an old-world feel. With a cool matte palette and well-worn artisan look, this coating will not take the original look away from tumbled pavers, rough cobble stones, stamped concrete, and flagstones. DRYLOK® Concrete Protector protects and beautifies with a slight sheen that brings out the unique color palette found in natural stone. This product contains 18% solids; the sheen of this coating can be lessened by cutting it with water if desired.

**LOW SHEEN PROTECTION AGAINST SALT,
WEATHERING, GAS, AND OIL**

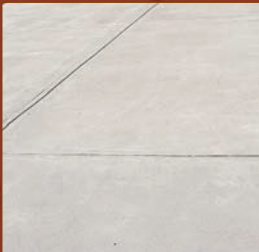
**PREVENTS EXCESSIVE DUSTING,
SURFACE CRACKING,
AND POCK MARKING**

HARDENS CONCRETE

CONTAINS SALTLOK®*



UNPROTECTED



PROTECTED

DRYLOK® WetLook Sealer with SaltLok® is the perfect choice for the sleek modern home. The clean lines and smooth face of modern brick and sandstone are simply complemented with a high gloss shiny smooth finish. This product has the highest solids of all the clears listed (25%) and will offer the most protection; however it can be slick when wet, so adding DRYLOK® Non-Skid Texture Additive for high traffic areas is recommended.

HIGH GLOSS FINISH

**CLEAR, NON-YELLOWING
UV RESISTANT SEALER**

CONTAINS SALTLOK®*



Bare unprotected masonry surfaces can age and deteriorate over time, with traffic and weather exposure. We tend to think of masonry as strong and impermeable but it is extremely porous. We love their look but need to maintain and preserve them to keep them intact and beautiful for years to come.

Many elements attack the horizontal and vertical masonry surfaces of driveways, garage floors, basement floors, concrete sidewalks, landscape walls, garden borders, retaining walls, brick siding, walkways, terrazzo, and slate surfaces.

This is why UGL®, the makers of DRYLOK®, has developed a defense plan in the family of Clear Masonry Coatings to lengthen the life of the strongest building materials. These formulas protect surfaces from wearing, cracking, crumbling, staining, spalling, deterioration, and discoloring.



SURFACE PREPARATION

The key to any successful application is surface preparation. Remove all dirt, wax, dust, mildew, and loose or scaling material with a scraper, wire brush, or stiff bristle brush. Grease, wax, and oil should be removed by scrubbing with UGL® DRYLOK® Concrete and Masonry Etch & Cleaner according to manufacturer's directions or use a heavy duty detergent in warm water. Rinse thoroughly with clean water. Efflorescence (white, powdery, salt-like deposits) visible on masonry must be removed with DRYLOK® Concrete and Masonry Etch & Cleaner (powder or liquid) or muriatic acid according to manufacturer's directions.

IMPORTANT: Rinse thoroughly with clean water. Etching solution allowed to dry on the masonry surface will prevent proper penetration and curing.

NOTE: Power washing is an effective method of cleaning masonry, however due to their high pressure, power washers trap residual moisture in the masonry. This may cause the coating to cloud. Eventually the coating will clear, but to avoid this clouding, it is important for the masonry to be completely dry prior to the application of the coating. To check for moisture, try this simple test: Tape a 12" x 12" piece of aluminum foil or 3 mil plastic sheeting tightly on all four edges to prepped surface. Remove after several days. If the ground side is wet, you have trapped moisture and need to wait for the surface to completely dry.

APPLICATION (for DRYLOK® Siloxane 7 Brick & Masonry Penetrating Sealer see label directions)

Apply product by brush, roller, spray or squeegee to thoroughly dry surface. Air and surface temperatures should be above 50°F and the relative humidity below 60%. One coat application is suggested. Do not apply in direct sunlight or if rain or heavy dew is expected within 24 hours. Spread evenly do not allow puddles or a heavy surface film to occur. Not for use on wood, metal, granite, marble or asphalt surfaces.



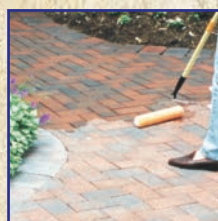
Apply by brush

THINNING

Due to variations in porosity, when applied over flagstone, slate, terrazzo, dense smooth or light colored concrete, thin with equal parts of clean, lukewarm water to minimize sheen variations.

DRYING TIME

Allow DRYLOK® Natural Look Sealer and DRYLOK® Concrete Protector to dry 6 hours before subjecting to light foot traffic and 24 hours before subjecting to heavy traffic. For DRYLOK® WetLook, we recommend floors may be subjected to light foot traffic after 24 hours and allow 72-96 hours before subjecting to heavy foot traffic, repositioning furniture or automotive traffic.



Apply by roller or spray

CLEAN UP

Clean brushes and application tools with soap and water.

COVERAGE

Depending upon surface porosity, one gallon of DRYLOK® Natural Look Sealer, DRYLOK® Concrete Protector, and DRYLOK® WetLook, will cover up to 400 sq. ft. DRYLOK® Siloxane 7 Brick & Masonry Penetrating Sealer can cover 210 square feet per gallon.



Dunmore, PA • Jacksonville, IL • Jackson, MS
ORDER NO. 71440 • LR219 • www.UGL.com

